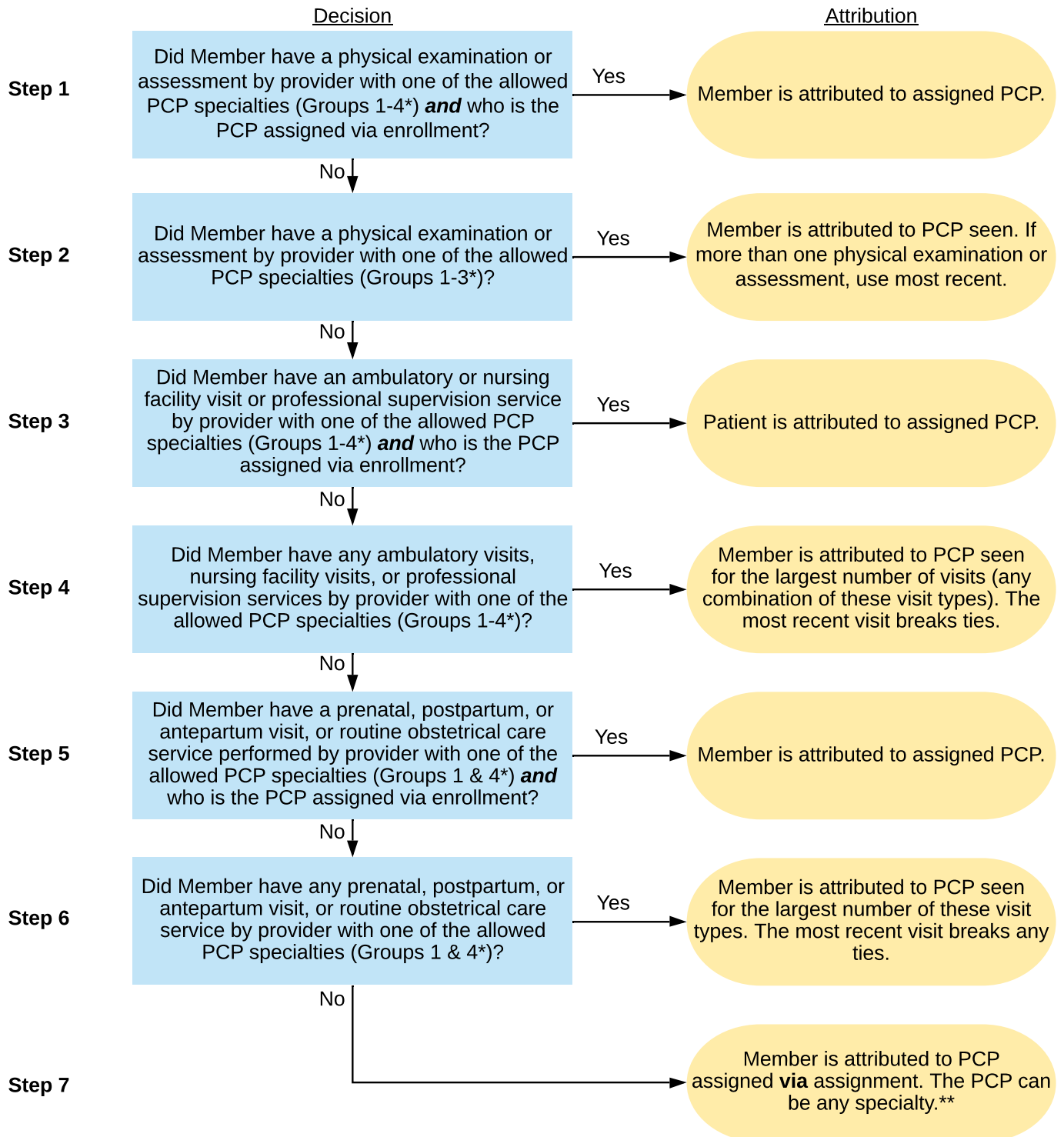


# PCP Attribution Methodology (with Assignment)

Stepwise process: Attribution made by earliest met criterion



\* Allowed PCP specialties are organized into Groups 1 through 5. See *PCP Provider Types & Specialities* PDF at [www.tipqic.org/dashboard.html](http://www.tipqic.org/dashboard.html).

\*\* If member is not attributed in Steps 1-7, is Female and 12 years or older, then a similar stepwise process is followed but with allowed provider specialties defined as those in Group 5\*.